

PART OF SEC. 29, T.7N., R.3E., S.L.B. & M.
EVERGREEN PARK SUBDIVISION NO. 1

IN WEBER COUNTY

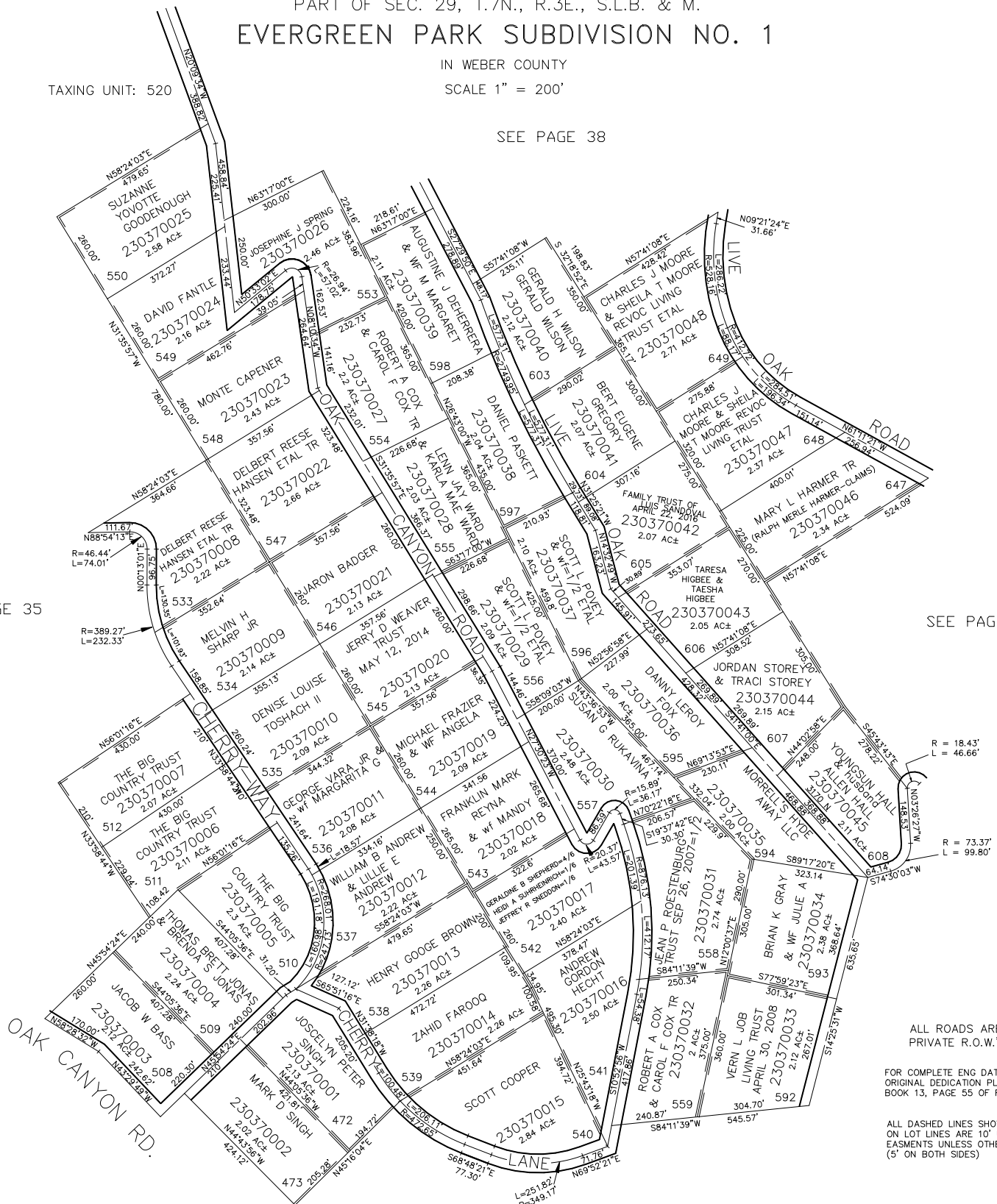
SCALE 1" = 200'

TAXING UNIT: 520

SEE PAGE 38

SEE PAGE 35

SEE PAGE 39



ALL ROADS ARE PRIVATE R.O.W.'S

FOR COMPLETE ENG DATA SEE ORIGINAL DEDICATION PLAT IN BOOK 13, PAGE 55 OF RECORDS.

ALL DASHED LINES SHOWN ON LOT LINES ARE 10' UTILITY EASEMENTS UNLESS OTHERWISE NOTED. (5' ON BOTH SIDES)

SEE PAGE 34